



Louisiana Optical Network Infrastructure  
A program of the  
Louisiana Board of Regents  
LSU A&M, 200 Frey Computing Services Center  
Baton Rouge, LA 70803  
Phone (225) 578-3700, Fax (225) 578-6400  
LONI.org

## LOUISIANA OPTICAL NETWORK INFRASTRUCTURE (LONI) FIVE-YEAR STRATEGIC PLAN

### MISSION STATEMENT:

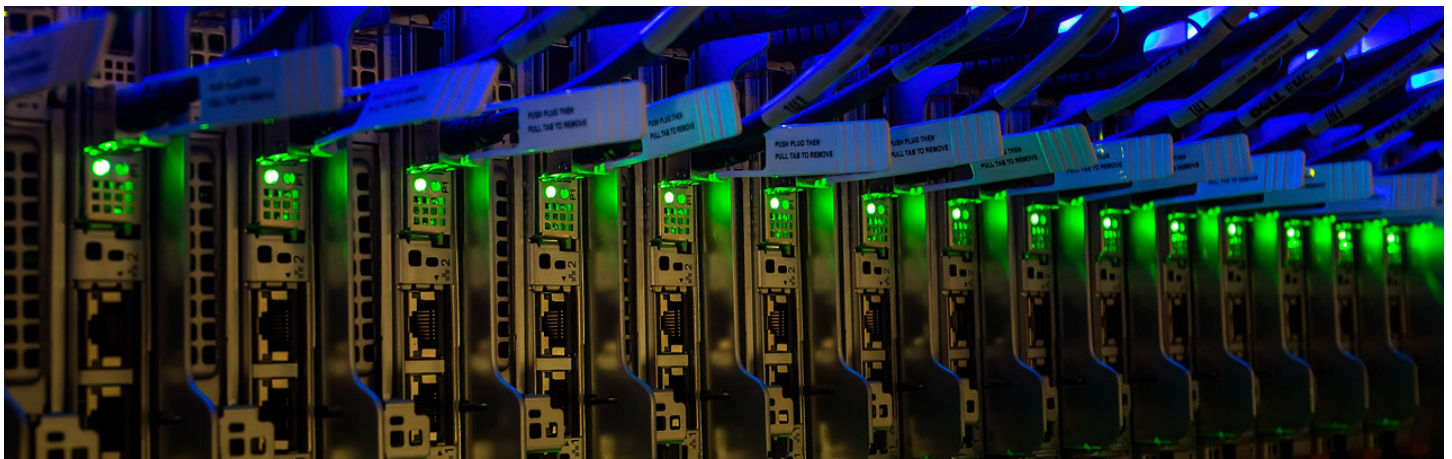
LONI seeks to be the preferred provider of value to its members through equitable, innovative, and practical delivery via a platform of services that empower cyberinfrastructure advancement, scholarship, research, knowledge, care, and the public good.

### LONI VISION STATEMENT:

LONI will be the most efficient and effective facilitator of cyberinfrastructure to members in support of key elements of the Board of Regent's Master Plan, including academia, resiliency, and public service.

### CORE PRINCIPLES:

- Sustainability – Long-term viability and longevity of the program.
- Communications – Information-sharing that supports higher education and promotes advocacy and transparency to facilitate collaboration among LONI members and external entities.
- Security – Services that help protect the cyberinfrastructure of LONI members.
- Research – Partnerships created for external funding and for traditional and non-traditional high-performance computing users to drive innovation and talent development.



LONI, a program of the Louisiana Board of Regents, is a high-speed fiber optics network connecting Louisiana research and education institutions that offers high-performance computing services to members. LONI is a membership-driven organization, operating as a managed service provider (MSP) under the authority of the Louisiana Board of Regents to deliver innovative solutions for its members.

LONI's members include institutions of the Louisiana State University (LSU) System, the Southern University (SU) System, the University of Louisiana System (ULS), and the Louisiana Technical and Community College System (LCTCS), as well as members of the Louisiana Association of Independent Colleges and Universities (LAICU), and research and education entities.

LONI's technology assets include a 1,600-mile-long system of fiber optics cables that provide members with private and public cloud access at an improved level of service over a typical service provider. The high-performance computing (HPC) service allows researchers to conduct demanding computational simulations to study a wide range of issues. When needed, LONI's HPC also provides critical decision-making support to Louisiana when needed by dedicating its full computing power to simulations of hurricane tracks, impacts of storm surge, and disaster recovery.

## RELATIONSHIPS



## **LONI STRATEGIC FOCUS AREAS:**

### **1. SUSTAINABILITY – Long-term viability and longevity of the program.**

**OBJECTIVE:** Become the preferred service provider by delivering exceptional service to boost sustainability through trusted member relationships.

- a. Implement and maintain mechanisms to gather feedback and insights from members to understand their needs and expectations with an eye towards improving service offerings to ensure satisfaction based on feedback.
- b. Maintain the member base by consistently delivering high-quality and cost-effective service offerings.
- c. Keep pace with technological advances in order to provide excellent service to members.

### **2. COMMUNICATIONS – Information-sharing that supports higher education and promotes advocacy and transparency to facilitate collaboration among LONI members and appropriate external entities.**

**OBJECTIVE:** Build and maintain strong relationships to ensure extensive use of LONI resources and services.

- a. Build awareness of the LONI organization statewide and promote an environment that enhances collaboration.

**OBJECTIVE:** Review communication channels to encourage collaboration and increase understanding among members.

- a. Optimize communication platforms and strategies to ensure effective and efficient information exchange.
- b. Continue to enhance meeting content and HPC training.

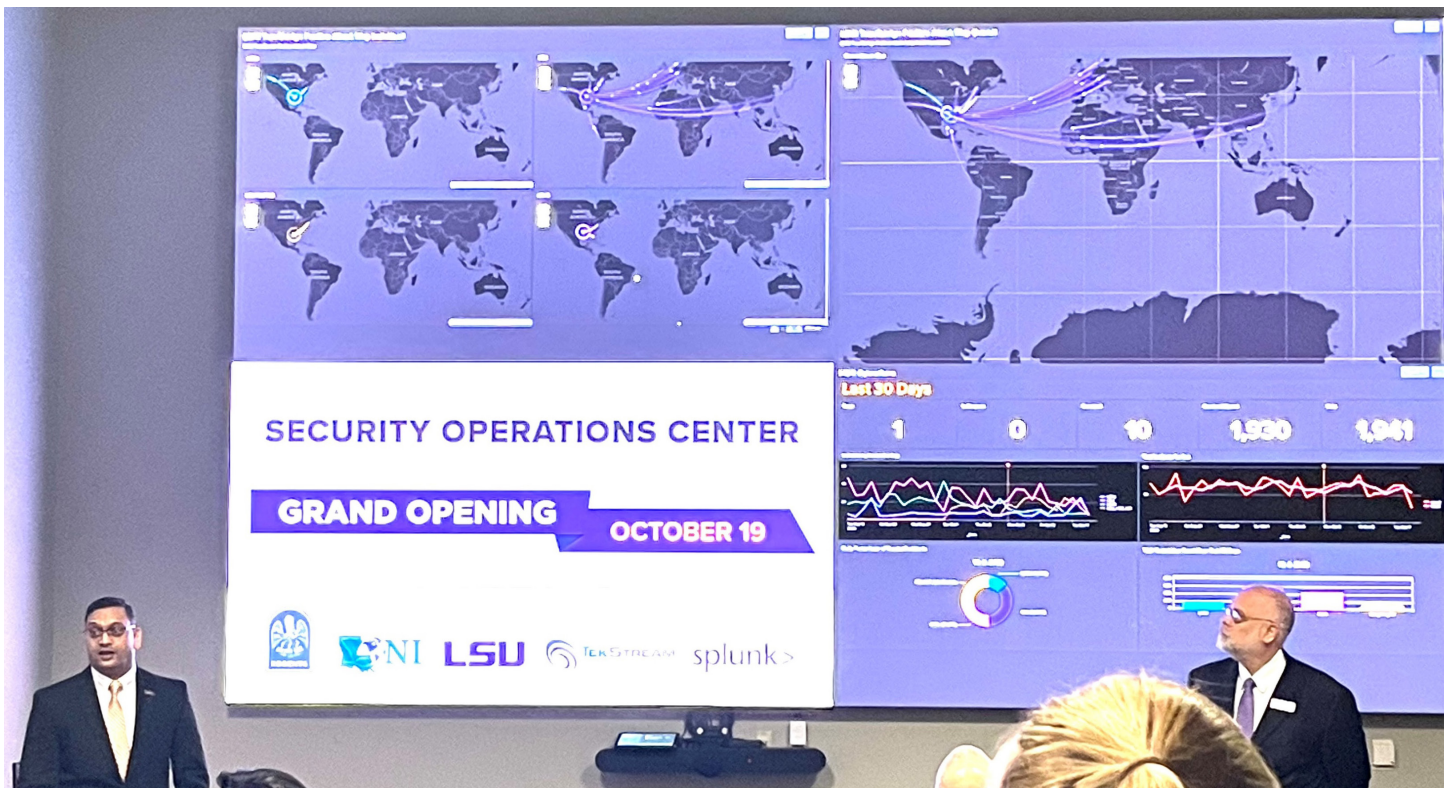




### 3. SECURITY – Services that help protect the cyberinfrastructure of LONI members.

**OBJECTIVE:** Keep pace with and grow services that increase the security portfolios of members.

- a. Implement and maintain a Security Operations Center (SOC) that delivers round-the-clock protection together with its industry partners.
- b. Implement advanced security measures and technologies to strengthen LONI's overall cyberinfrastructure and perimeter security to safeguard member data.



### 4. RESEARCH – Partnerships created in support of research activities and functions.

**OBJECTIVE:** Increase traditional and non-traditional high-performance computing (HPC) users.

- a. Collaborate to identify research gaps in LONI members' cyberinfrastructure for research relative to the State of Louisiana's Science and Technology Plan.
- b. Establish partnerships to develop collaborative research initiatives focused on HPC and cyberinfrastructure advancements.